

SUPPLEMENTAL INFORMATION

VERTICAL SURFACES / INTERIOR STONE BASE

SECTION 1. INTRODUCTION

- 1.01 Installation Methods.** There are several methods by which interior stone base can be installed. Consideration should be given to the various features of each method in making a selection for a specific installation. See information about installation methods on the following page, and illustrations of examples at the close of this section.
- 1.02 Delivered ready to install.** Generally, stone base is cut to required lengths by the fabricator, based on job-site measurements furnished by the stone contractor, and delivered to the job site ready to install.
- 1.03 Exposed stone edges** must be gauged to the precise thickness specified. Gauging tolerance cannot be over $\pm 1/32"$.
- 1.04 White portland cement** is recommended for light-colored granite and marble. White portland cement with a low alkali content is recommended for limestone.

For additional information, refer to Chapter 13, Installation General Information.

- 1.05 Geographic Methods.** Some installation methods and materials are not recognized and may not be suitable in some geographic areas because of local trade practices, building codes, climatic conditions, or construction methods. Therefore, while every effort has been made to produce accurate guidelines, they should be used only with the independent approval of technically qualified persons.

SECTION 2. PRODUCT DESCRIPTION

- 2.01 Basic Use.** Lowest or bottom part of structural elements such as columns, piers, and walls.
- 2.02 Fabrication.** Stone base units are fabricated to dimensions specified on shop drawings, prefinished, and delivered to the job site ready to be cut into required lengths for installation.
- 2.03 Finishes.** Exposed surfaces and edges are to be finished with any typical stone finish, usually polished.
- 2.04 Colors.** Most of the commercially available varieties are suitable.
- 2.05 Sizes.** Thicknesses of $3/8"$, $1/2"$, $3/4"$, $7/8"$, $1-1/4"$, or as specified.

SECTION 3. TECHNICAL DATA

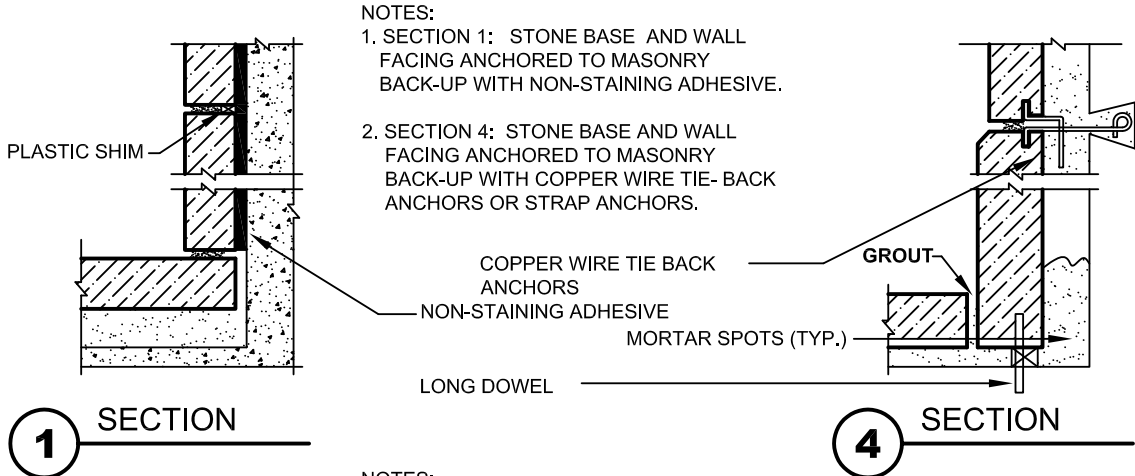
- 3.01 Each stone variety used for interior stone base should conform to the applicable ASTM standard specification and the physical requirements contained therein. The specification for each stone type follows:
- A) Granite:** ASTM C615 Standard Specification for Granite Dimension Stone

SECTION 4. INSTALLATION

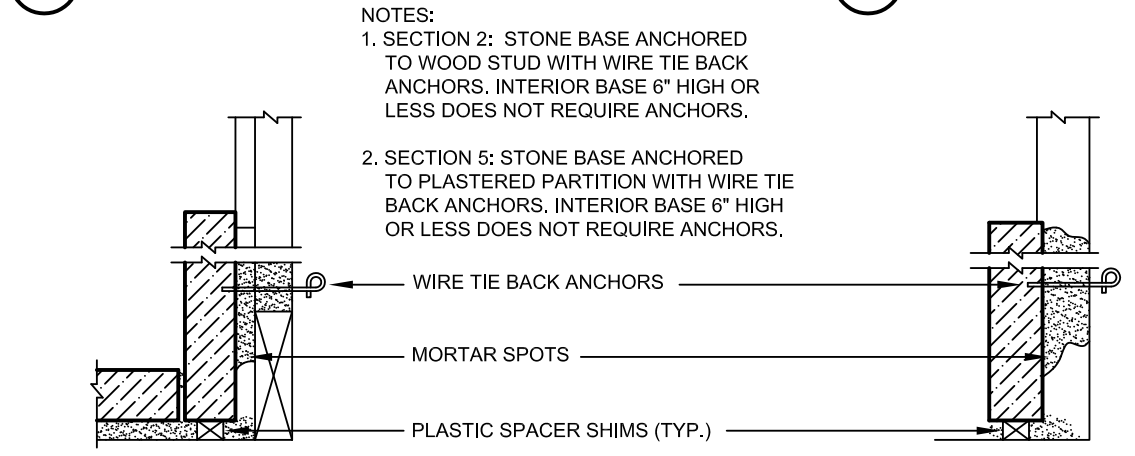
- 4.01 Methods.** Interior stone base can be installed either by the standard set method or the thin-set method.
- 4.02 Joints.** Joints are pointed with white cement, grout, or nonstaining sealant. Joint width must be specified.

- 4.03 General Precaution.** During construction, the General Contractor shall protect all stone from staining and damage.

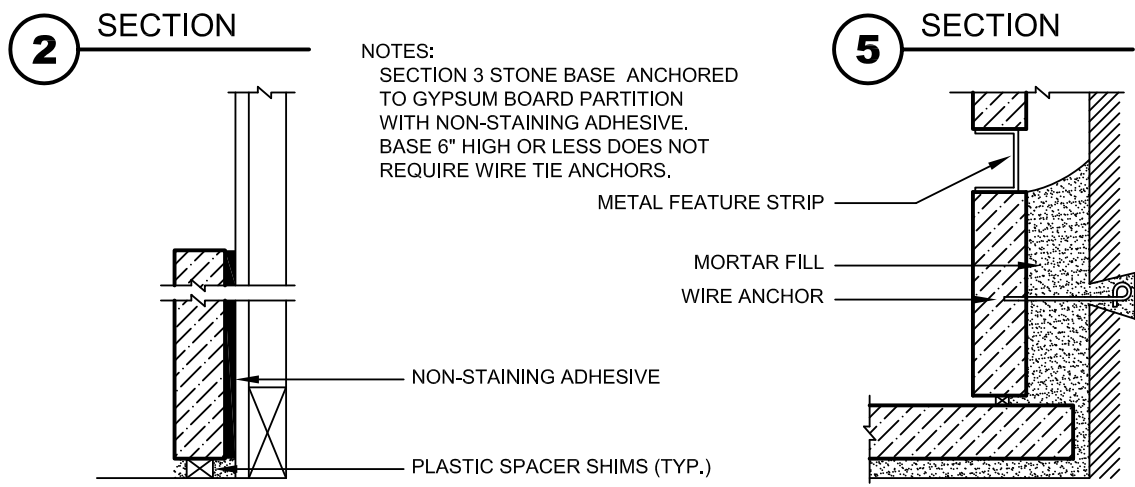
SUPPLEMENTAL INFORMATION VERTICAL SURFACES / INTERIOR STONE BASE



NOTES:
 1. SECTION 1: STONE BASE AND WALL FACING ANCHORED TO MASONRY BACK-UP WITH NON-STAINING ADHESIVE.
 2. SECTION 4: STONE BASE AND WALL FACING ANCHORED TO MASONRY BACK-UP WITH COPPER WIRE TIE- BACK ANCHORS OR STRAP ANCHORS.



NOTES:
 1. SECTION 2: STONE BASE ANCHORED TO WOOD STUD WITH WIRE TIE BACK ANCHORS. INTERIOR BASE 6" HIGH OR LESS DOES NOT REQUIRE ANCHORS.
 2. SECTION 5: STONE BASE ANCHORED TO PLASTERED PARTITION WITH WIRE TIE BACK ANCHORS. INTERIOR BASE 6" HIGH OR LESS DOES NOT REQUIRE ANCHORS.



NOTES:
 SECTION 3 STONE BASE ANCHORED TO GYPSUM BOARD PARTITION WITH NON-STAINING ADHESIVE. BASE 6" HIGH OR LESS DOES NOT REQUIRE WIRE TIE ANCHORS.

NOTE: ALL METALS CONTACT WITH STONE MUST BE CORROSION RESISTANT.



MARBLE INSTITUTE of AMERICA
 28901 Clemens Road - Suite 100
 Cleveland, OH 44145
 Tel: (440) 250-9222
 Fax: (440) 250-9223
 www.marble-institute.com

REV	DATE
0	Aug 2006
1	Oct 2006

**INTERIOR STONE BASE
TYPICAL DETAILS**
 MIA DIMENSION STONE DESIGN MANUAL VII

DRWG NO: 15-D-21 SCALE: 6" = 1'-0"