

**DAKOTA GRANITE**

*The Mahogany People*

# Dakota Granite Company



is an established leader in memorial manufacturing and quarry production. Since Dakota Granite's beginning in 1925, an innovative spirit and investments in new technology has positioned the company as one of the premier manufacturers and quarriers of granite in America.

Dakota Mahogany granite, Dakota Granite's flagship stone, has been the obvious choice for memorialization and commercial/architectural applications for many years. Dakota Mahogany granite is durable, aesthetically pleasing and is a low maintenance material. It's ability to withstand nature's harshest elements has made it the benchmark by which all others are measured.

Dakota Mahogany has been utilized in building projects around the world since the mid 1950's. Architects and developers recognize the value and security that Dakota Mahogany encompasses as a supreme building material. Dakota Mahogany is a preeminent material amongst educational and financial institutions, hospitals and corporate buildings. The combination of feldspar and quartz transcend a warm rich tone that displays subdued warmth of color while creating a sense of comfort and experience.





This comfort and experience is exactly what customers receive when interacting with the staff at Dakota Granite Company. The team of sales staff and quarry personnel work closely with block inspectors to ensure their needs are met in a timely manner and their purchasing experience exceeds their expectations.

The quarrying process of today utilizes wire saws and high pressure drills. These quarrying techniques have increased quarry yields and minimized stress to the granite blocks themselves. Dakota Granite has an inventory of blocks available for block inspectors to choose from that will meet the requirements for any granite project.

Dakota Granite Company is committed to our customers and the environment. These values and commitment to them will enable Dakota Granite and Dakota Mahogany granite to be on the forefront of the stone industry for years to come.

Dakota Granite Company is the original mahogany headquarters.





# sunset



The Sunset Mahogany quarry supplies monumental grade material to our state-of-the-art memorial processing facility. Sunset Mahogany has also been used in some of the world's most prestigious building projects, including the Taipei 101 Financial District in Taiwan. Its use of polished panels, pavers and water features are a testament to its versatility. Sunset Mahogany's deep blue/brown background interspersed with colored grains have made it one of the most recognizable granites in the world.

Although there are many stones that call themselves "mahogany", Dakota Granite's Sunset Mahogany is the original and continues to be the "mahogany" to which all others are compared.

## TEST DATA:

Compressive Strength:	22,500 PSI
Modules of Rupture:	2,820 PSI
Water Absorption:	0.106% By Weight 0.288% By Volume
Flexural Strength:	1,598 PSI
Abrasion Index:	57.08 Ha
Annual Quarry Production:	2,000 M3

Type of Stone: Granite  
Quarry Location: Milbank, South Dakota U.S.A.

The specimens were tested in accordance with ASTM Methods C170-06, C99-06, C97-02, C880-06, C241-05 by the United States Testing Company, Inc.





# mahogany



**PROJECT** Taipei 101 Financial District - Taipei, Taiwan







# whetstone

Since the Whetstone property was purchased in 1990, this quarry has been developed into our “project quarry” to meet the demands of even the largest projects.

Since switching to wire saw production its yields have increased dramatically. Of all our quarries, it shows the greatest potential for both premium gang saw blocks and smaller economy blocks perfect for project production, like the prominent Prince Court Hospital in Malaysia.

Like our other Dakota Mahogany quarries, Whetstone’s impressive test data make it ideal for outdoor use in any climate and for heavy foot traffic areas.

## TEST DATA:

Compressive Strength:	22,500 PSI
Modules of Rupture:	2,820 PSI
Water Absorption:	0.106% By Weight 0.288% By Volume
Flexural Strength:	1,598 PSI
Abrasion Index:	57.08 Ha
Annual Quarry Production:	2,000 M3
Type of Stone:	Granite
Quarry Location:	Milbank, South Dakota U.S.A.

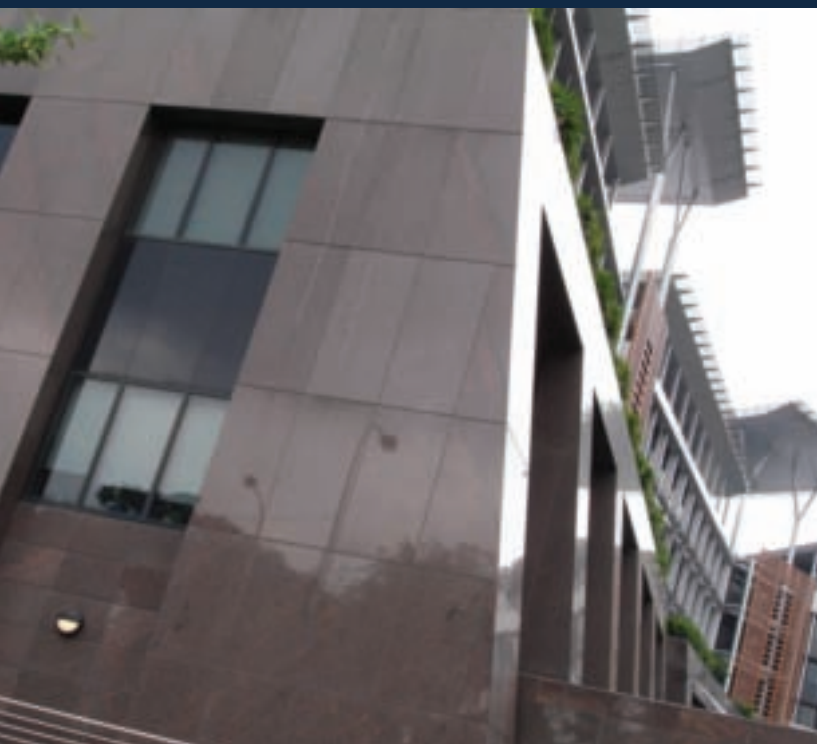
The specimens were tested in accordance with ASTM Methods C170-06, C99-06, C97-02, C880-06, C241-05 by the Unites States Testing Company, Inc.



# mahogany



**PROJECT** Prince Court Hospital - Kuala Lumpur, Malaysia

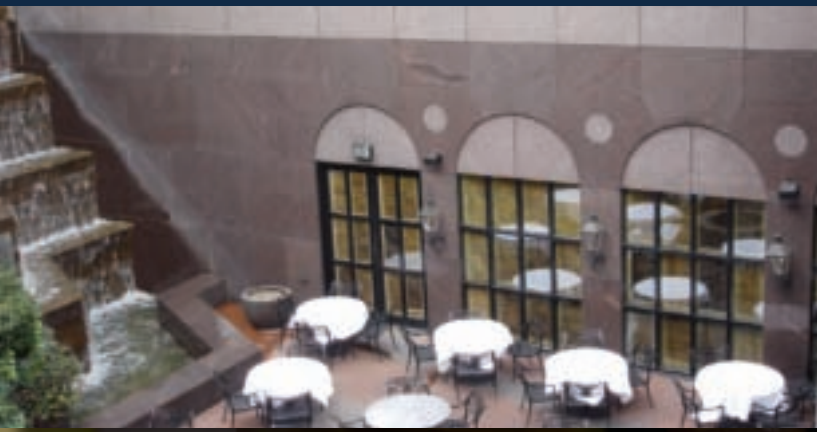




# mahogany



## PROJECT Lincoln Plaza - Dallas, Texas U.S.A.







# american

American Bouquet has been in Dakota Granite's family of granites since 1937. Its main use has been for monuments but it's also an ideal candidate for dimensional stone as well.

Imagine Dakota Mahogany without the blue quartz and 3 times as much salmon color and you'll understand why American Bouquet has been a favorite in the monument industry for over 70 years.

## TEST DATA:

Compressive Strength:	26,500 PSI
Modules of Rupture:	2,800 PSI
Water Absorption:	0.100% By Weight
Flexural Strength:	2,300 PSI
Abrasion Index:	35.50 Ha
Annual Quarry Production:	750 M3

Type of Stone: Granite  
Quarry Location: Milbank, South Dakota U.S.A.

The specimens were tested in accordance with ASTM Methods C170-06, C99-06, C97-02, C880-06, C241-05 by the United States Testing Company, Inc.





# bouquet

OTTER TAIL  
Power Company

## PROJECTS Otter Tail Power Company - Milbank, South Dakota U.S.A.



Ford Foundation Building, New York NY U.S.A.  
(mahogany)



Texas Children's Hospital, Houston TX U.S.A.  
(mahogany)





# bellingham

Introducing Bellingham granite from Bellingham, Minnesota. Located approximately 13 miles from our Milbank, South Dakota facility, it's a granite that up until now has been used solely for memorial monuments.

Bellingham's color is predominately pink/beige mixed with flecks of black giving it a subdued sophistication. Bellingham's lighter color makes it perfect for mixing with a darker color where high contrast is needed. Also, it's exceptional hardness make it the ideal granite for areas where heavy traffic occurs, such as polished airport floors or thermal outdoor sidewalks, and with its low absorption rate, water stains won't be an issue.

## TEST DATA:

Compressive Strength:	25,100 PSI
Modules of Rupture:	2,600 PSI
Water Absorption:	0.130% By Weight
Flexural Strength:	2,100 PSI
Abrasion Index:	32.3 Ha
Annual Quarry Production:	750 M3

Type of Stone: Granite

Quarry Location: Bellingham, Minnesota U.S.A.

The specimens were tested in accordance with ASTM Methods C170-06, C99-06, C97-02, C880-06, C241-05 by the Unites States Testing Company, Inc.





# PROJECT

**Governor's Mansion  
Pierre, South Dakota U.S.A.**



(mahogany)

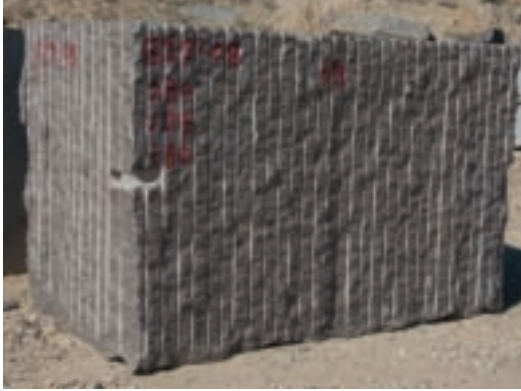


(mahogany)



# grades & finishes

## Building Grade Blocks



**Construction Limited:** Dakota Mahogany's most homogeneous building grade selection suitable for smaller polished projects where a medium grain with slight to moderate orange variegation is desired.

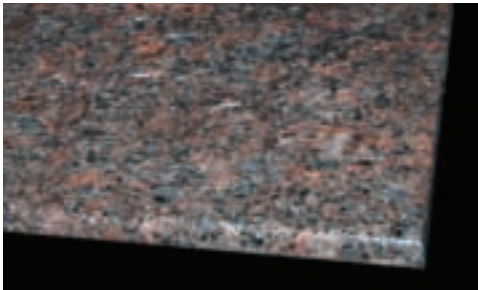
**Construction Standard:** Dakota Mahogany's world renown standard, recognized around the world as the benchmark Mahogany color, medium grain with moderate random orange and limited black variegation.

**Construction Creative:** Dakota Mahogany's most variegated selection represents nature's flair for the exquisite with color combinations, grain variations, and patterns that suggest no boundaries.

**Monumental:** Dakota Mahogany's most uniform selection with a limited supply available supply available.

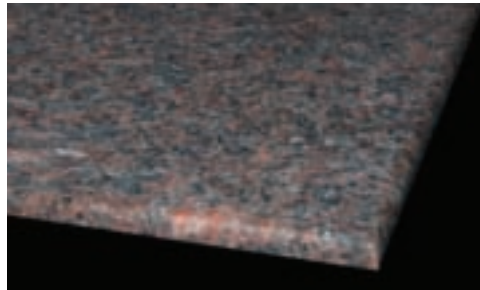
## Finishes

Dakota Mahogany is a rich dark brown granite that is used in many applications, including those where different finishes produce contrasting colors and hues. There is almost an infinite variety of tooling and finishing applications available to produce the look and feel desired to make each project unique. Below are examples of the most common finishes.



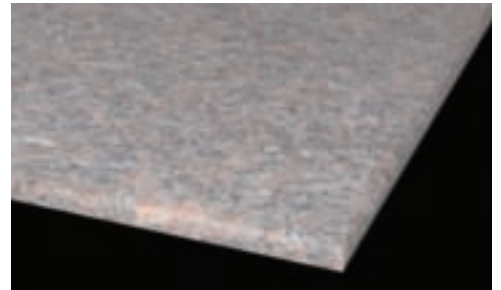
### **Polished**

Highly reflective mirror finish. Granite color is vivid and distinct. Surface is smooth.



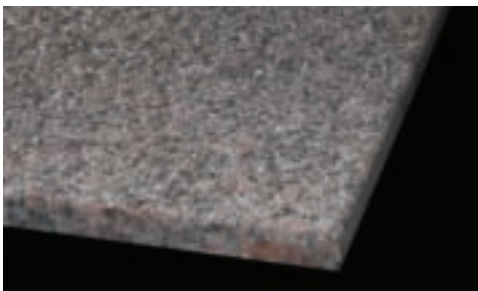
### **Honed**

Slight to non-reflective finish. Granite color is subdued and softened. Surface is smooth.



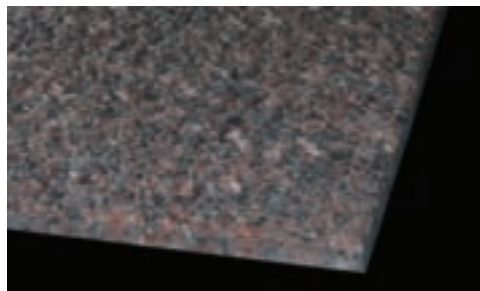
### **Sawn**

Non-reflective finish. Granite color is muted and toned down. Surface is smooth.



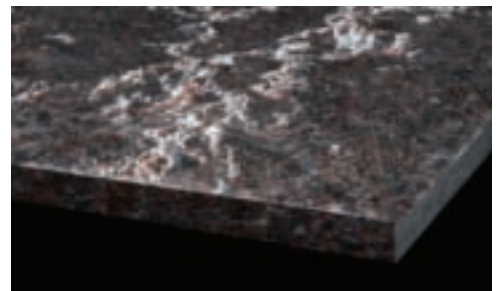
### **Sandblasted**

Non-reflective finish. Granite color is muted and toned down. Surface is rough.



### **Flamed**

Non-reflective finish. Granite color is subdued and softened. Surface is rough.



### **Rock**

Non-reflective finish. Granite color is distinctive. Surface is rugged and irregular.

# transportation

Dakota Granite is centrally located in the northern tier of the United States. Dakota Mahogany blocks have been shipped all across North America and around the world. Our logistics team will ensure compliance with all necessary customs paperwork.

Estimating weight of granite blocks can vary because of shape and the agreed upon measurements.

To estimate weight calculate:

-When sawn to size F3 = 190lbs or M3 = 6,710 lbs

-Rough block size F3 = 220lbs or M3 = 7,769 lbs

## The methods of transportation of goods from the quarry are:

**Flatbed Truck:** 45,000 lbs estimated capacity

Single block truck loads - 200 F3 maximum

Two or more block truck loads - 183 F3 maximum

Loading charges are inclusive to sale.



**Rail:** 200,000 lbs estimated capacity

850-875 F3 or 24 M3 maximum

Gondolas are railed to eastern ports, blocks are then placed into containers at the port and loaded on to the vessel. Shipment times vary depending on booking schedule. Estimated transport time to port is approximately 4 weeks.

Loading charges are inclusive to sale. **Containers loaded at port can accommodate up to 60,000 lbs.**



**Container:** 43,500 lbs estimated capacity

200 F3 or 5.7 M3 maximum

Containers are stuffed at the quarry and transported via truck to the container yard in St. Paul, MN. Blocks are then loaded on board a trans for shipment to the coast to be shipped via vessel. Estimated transport time of 6-8 weeks.

Loading has additional charges.





# DAKOTA GRANITE

48391 150th St

PO Box 1351

Milbank, SD 57252 U.S.A.

Tel: (800) 843-3333      (605) 432-5580

Fax: (800) 338-5346      (605) 432-6155

email: [dakota@dakgran.com](mailto:dakota@dakgran.com)      website: [www.dakotagranite.com](http://www.dakotagranite.com)